

Head in the Clouds...



EarthEnv.org

Building a (near) global 1km dataset of...

- Land Surface Temperature (LST)
- Temperature (using LST)
- Clouds
- Precipitation (using Clouds)
- Topography (and related metrics)

NASA, NCEAS, ...

Cloud Climatology

Clouds vital for:

- Global energy balance, latent heat flux, radiation flux (Stephens and Kummerow, 2007)
- Ecosystem Productivity (Fischer et al., 2009; Graham et al., 2003; Williams et al., 2008)
- Eco-physiology, such as activity patterns of ectotherms (Hare and Cree, 2010)
- Evapotranspiration and water loss in animals and plants
- Behavior and light availability: Clouds affecting predation exposure and foraging behavior of nocturnal animals
- Precipitation (Stephens and Kummerow, 2007)

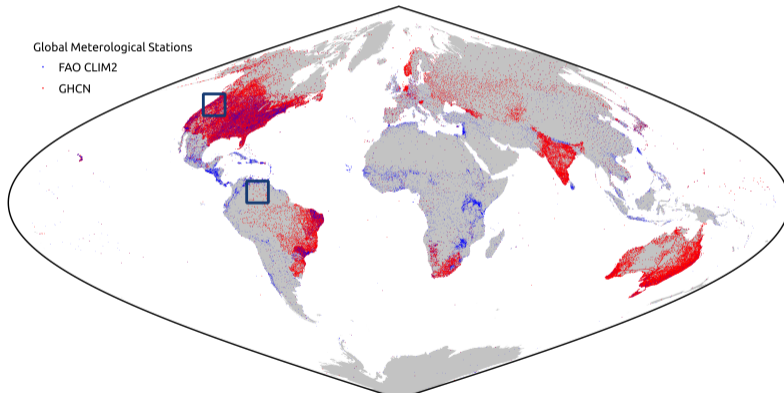
Cloud Climatology

Clouds vital for:

- Global energy balance, latent heat flux, radiation flux (Stephens and Kummerow, 2007)
- Ecosystem Productivity (Fischer et al., 2009; Graham et al., 2003; Williams et al., 2008)
- Eco-physiology, such as activity patterns of ectotherms (Hare and Cree, 2010)
- Evapotranspiration and water loss in animals and plants
- Behavior and light availability: Clouds affecting predation exposure and foraging behavior of nocturnal animals
- Precipitation (Stephens and Kummerow, 2007)

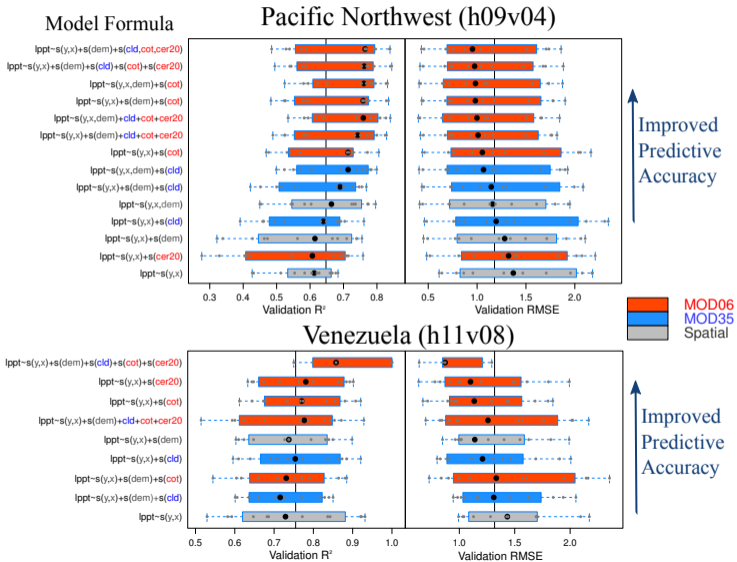
Often ignored in biogeography

Improving Interpolation of Precipitation using Cloud Data¹

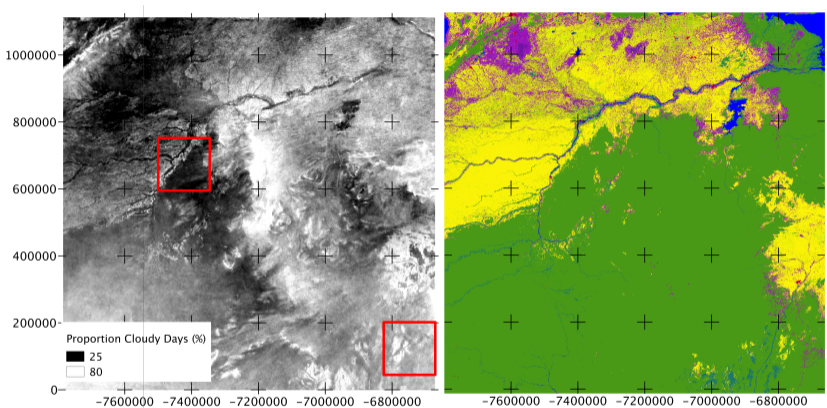


¹IBS 2013

Improving Interpolation of Precipitation using Cloud Data¹



MODIS Cloud Mask Landcover Bias (Venezuela)



MCD12Q1_IGBP_2005_v51

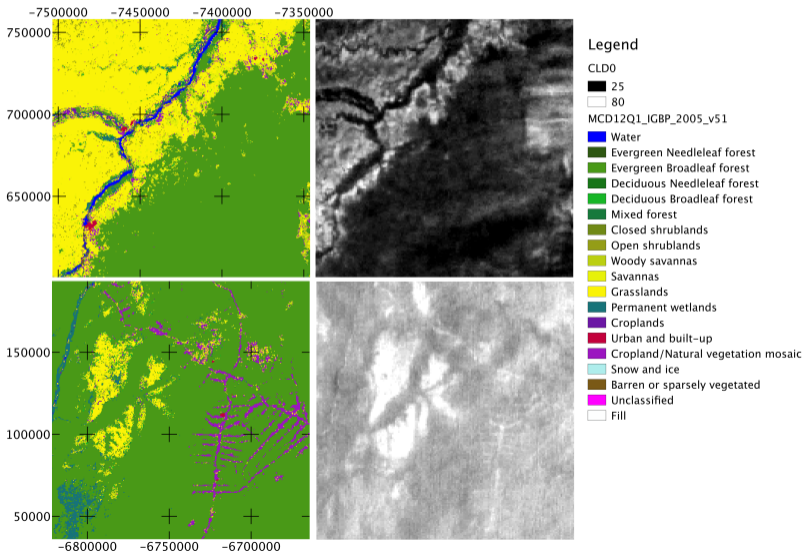
- Water
- Evergreen Needleleaf forest
- Evergreen Broadleaf forest
- Deciduous Needleleaf forest

- Deciduous Broadleaf forest
- Mixed forest
- Closed shrublands
- Open shrublands
- Woody savannas

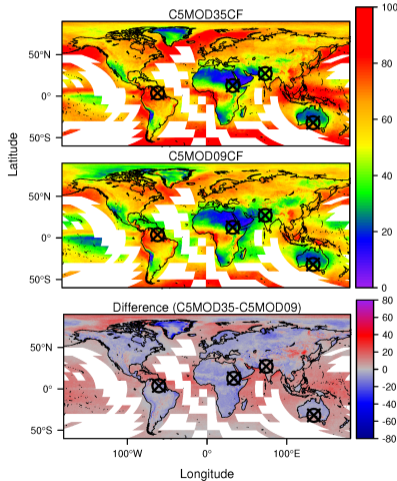
Legend

- Savannas
- Grasslands
- Permanent wetlands
- Croplands
- Urban and built-up
- Cropland/Natural vegetation mosaic
- Snow and ice
- Barren or sparsely vegetated
- Unclassified
- Fill

MODIS Cloud Mask Landcover Bias (Venezuela)

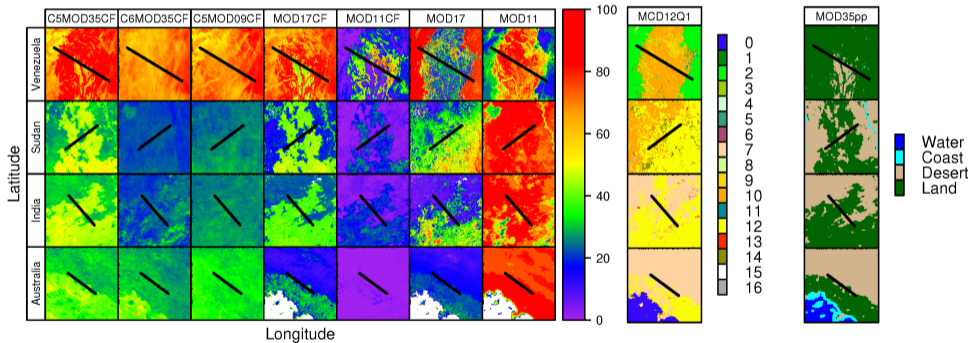


Systematic landcover bias in Collection 5 MODIS cloud mask and derived products ²

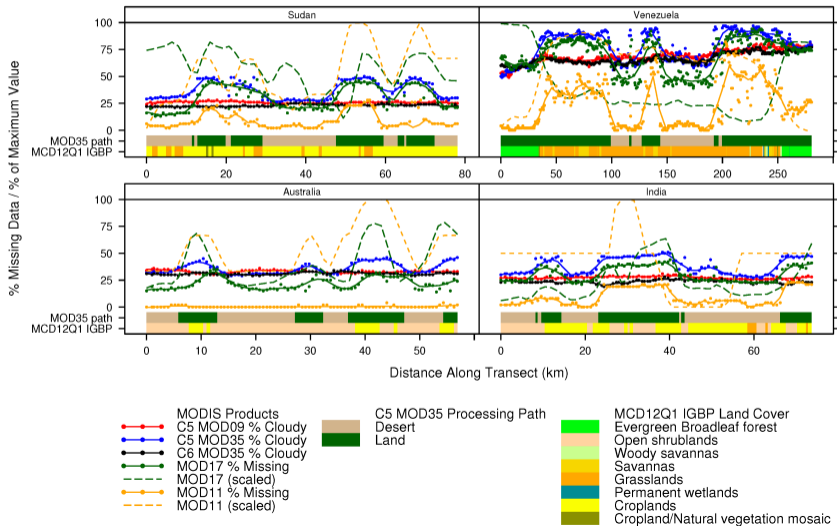


²Remote Sensing of Environment (in press)

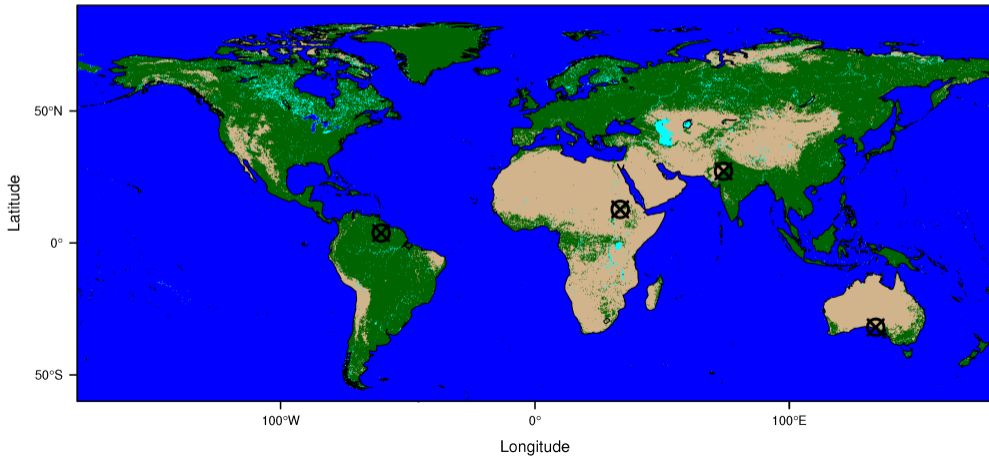
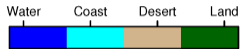
Systematic landcover bias in Collection 5 MODIS cloud mask and derived products ²



Systematic landcover bias in Collection 5 MODIS cloud mask and derived products ²



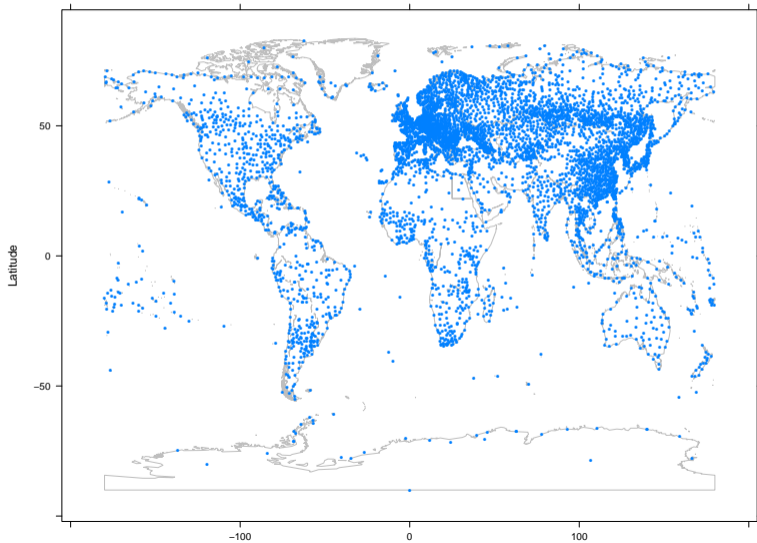
Systematic landcover bias in Collection 5 MODIS cloud mask and derived products ²



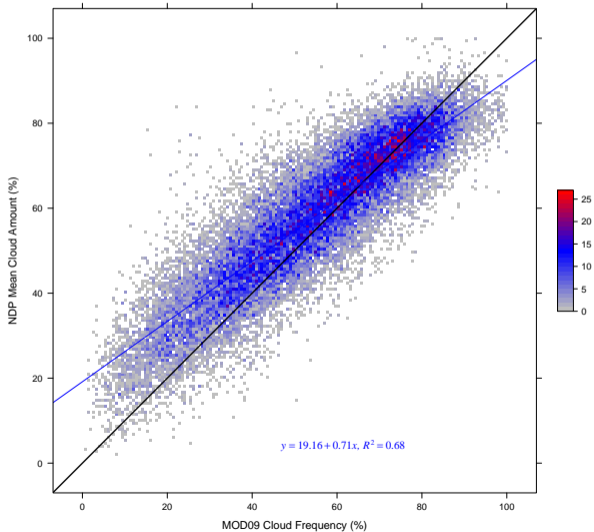
MOD09 Cloud Mask (bit 10 in the first QA byte)

Validation

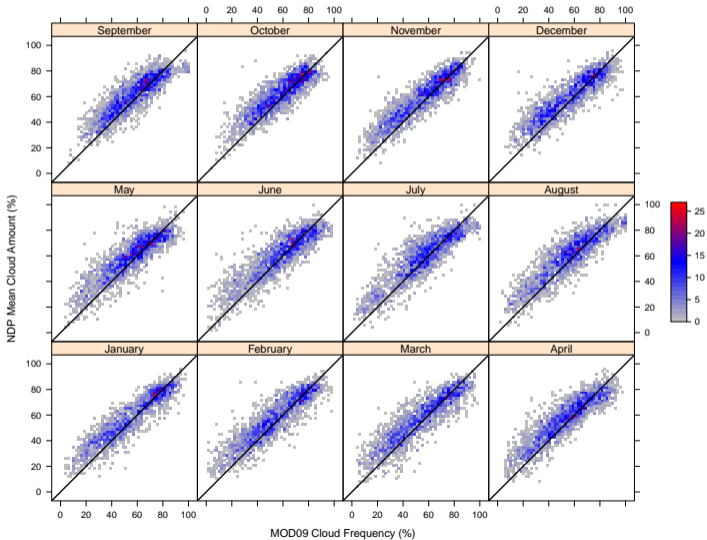
NDP-026D Cloud Climatology Stations



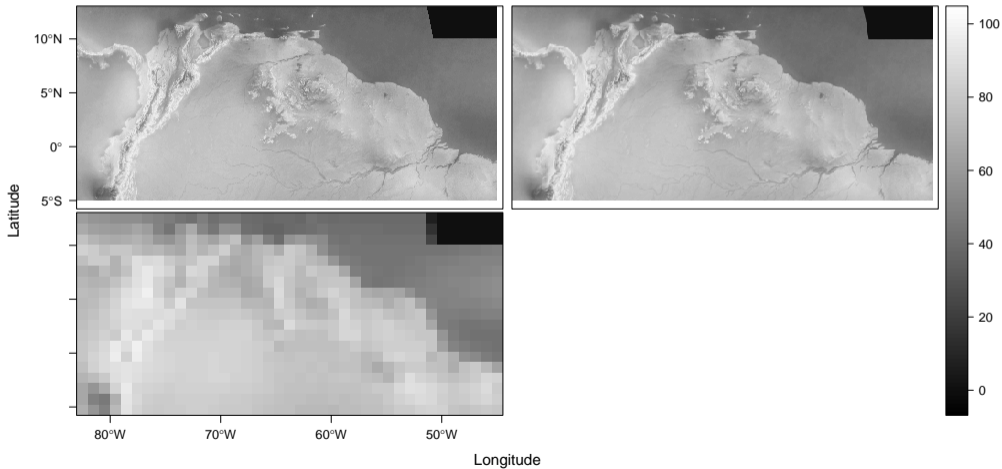
Validation



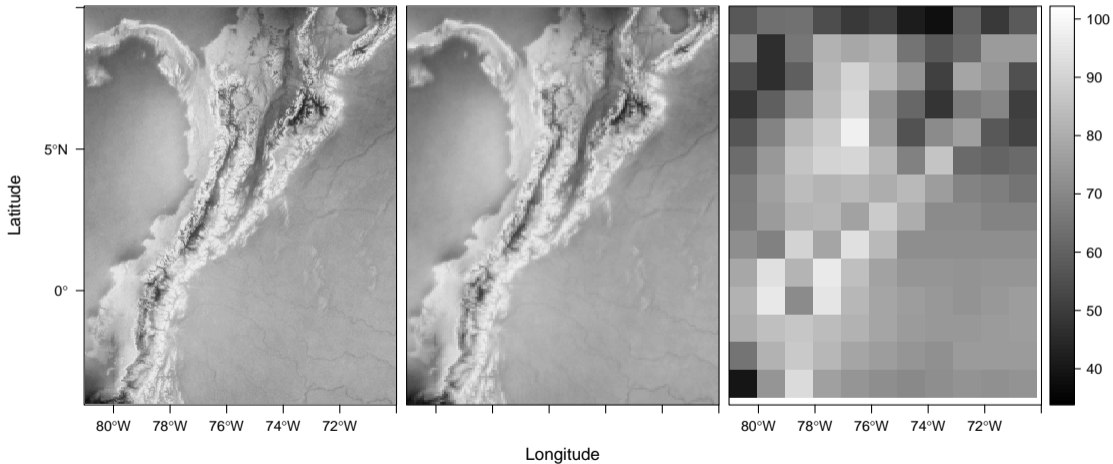
Validation



Resolution Matters (1km, 8km, 110 km)

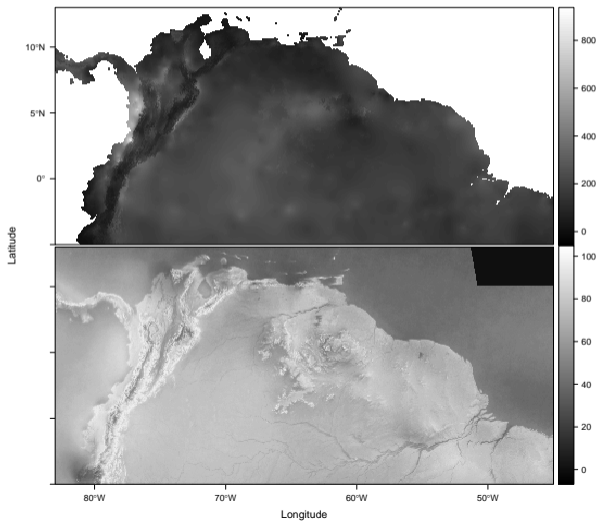


Resolution Matters (1km, 8km, 110 km)



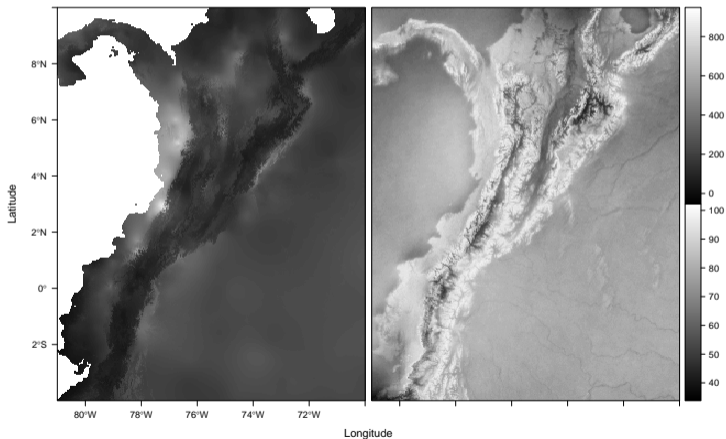
Resolution \neq Realism

Comparison of Cloud Cover and WorldClim Mean Annual Precipitation



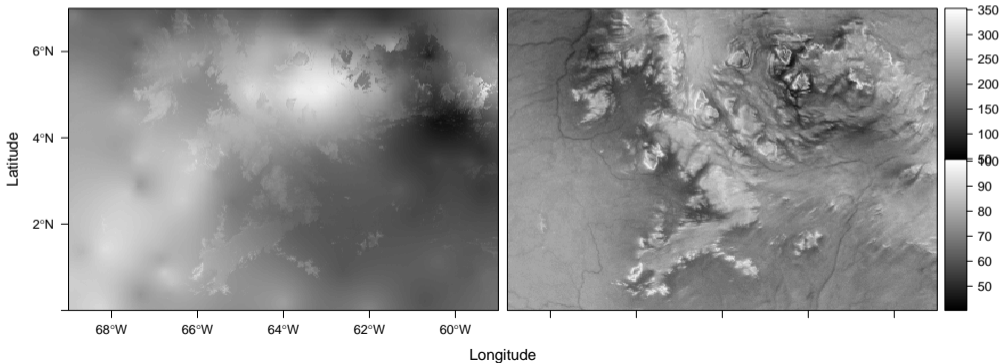
Resolution \neq Realism

Comparison of Cloud Cover and WorldClim Mean Annual Precipitation



Resolution \neq Realism

Comparison of Cloud Cover and WorldClim Mean Annual Precipitation



Validation & Final Products

Validation

- Spatial Residuals
- Landcover biases
- Latitudinal Gradient

Final Products

- Annual mean
- Monthly means + SDs
- Variability among and within years