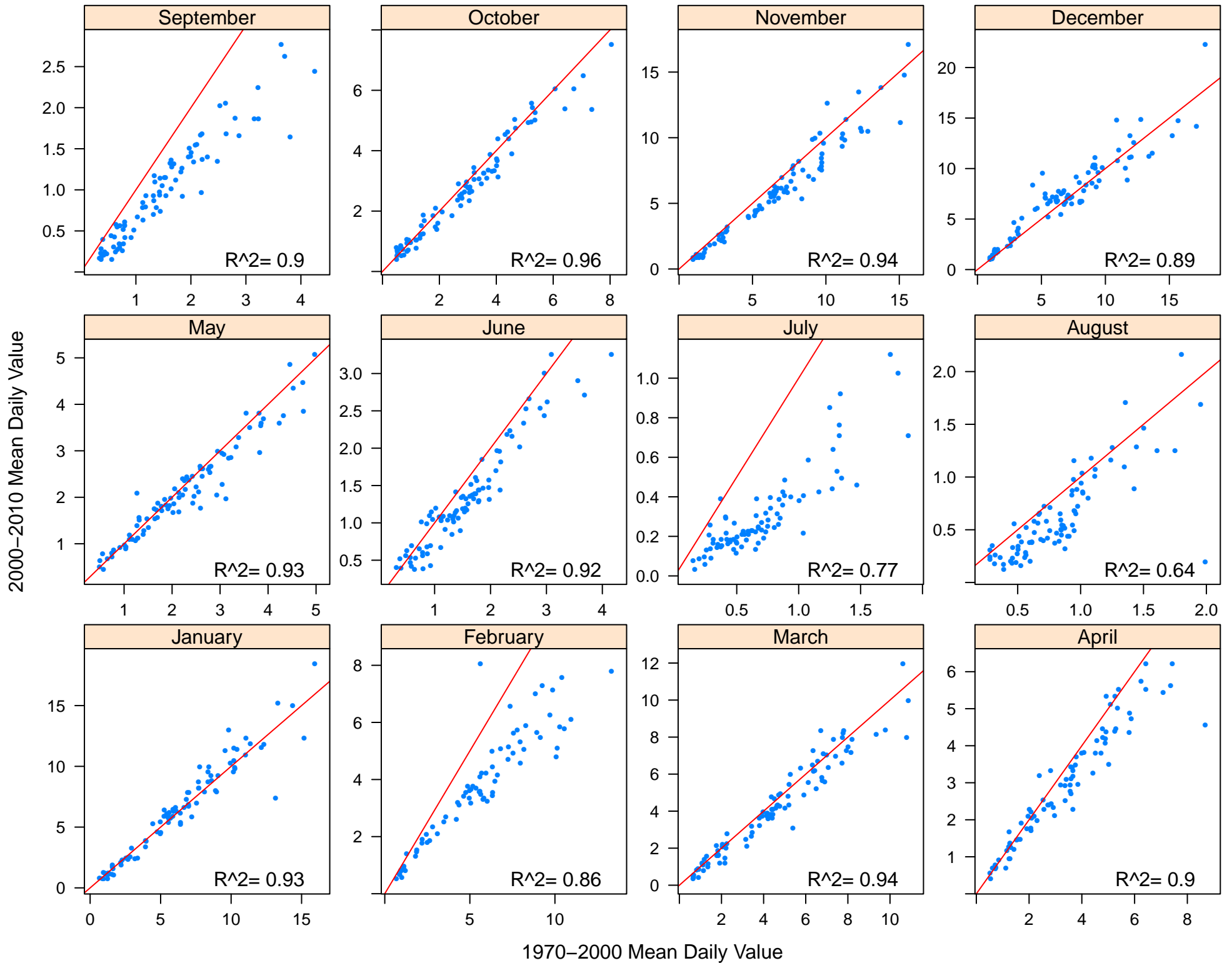
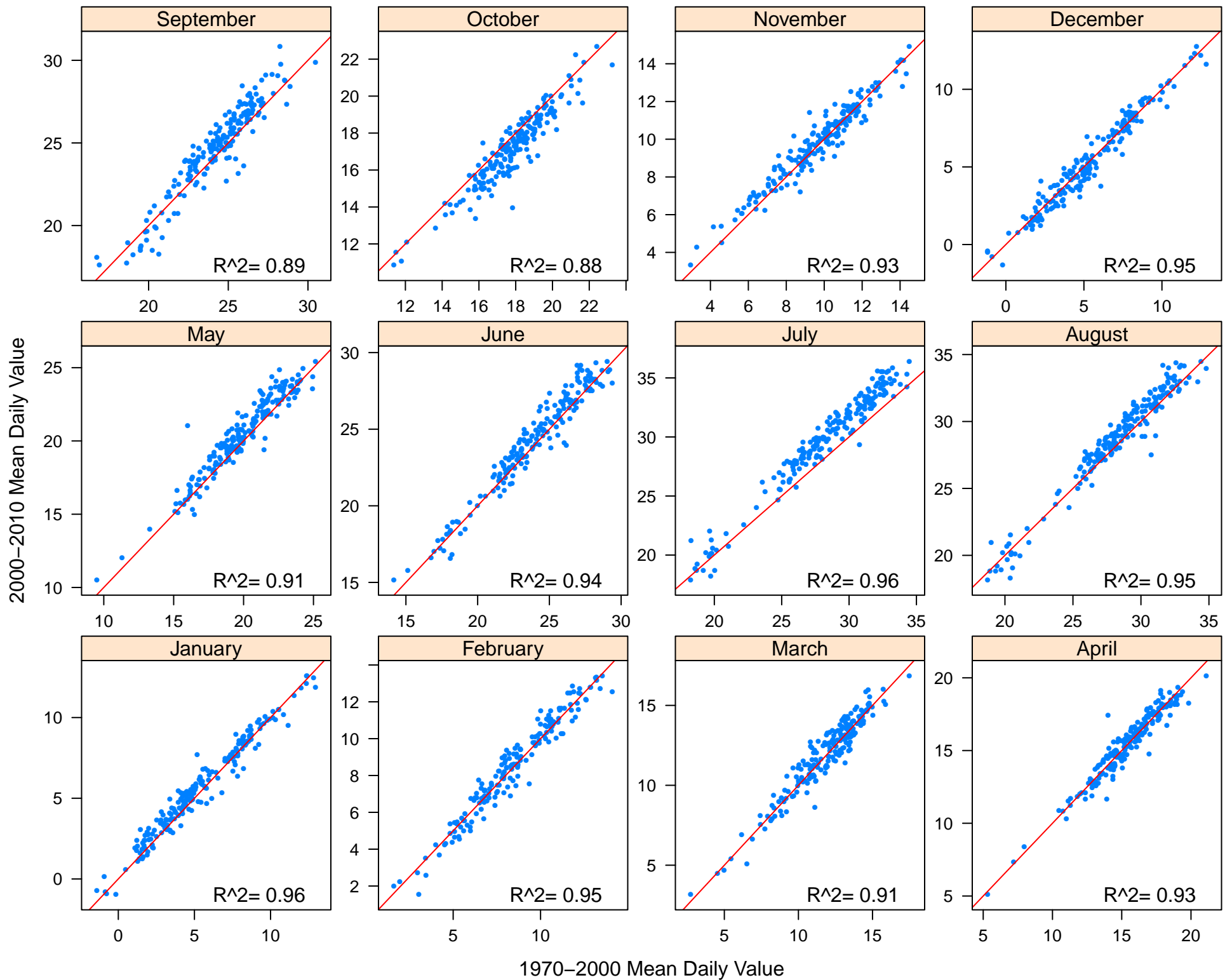


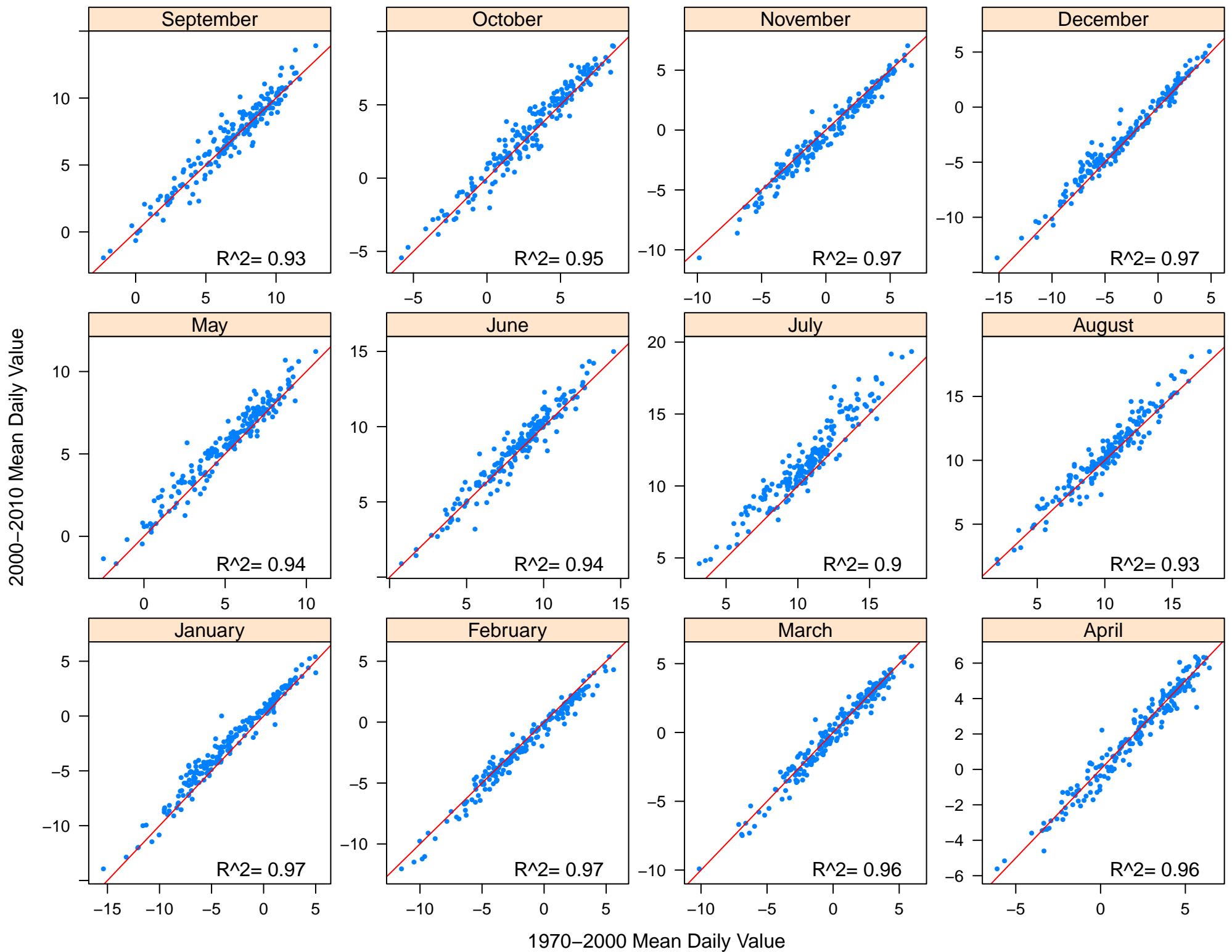
Comparison of Mean Daily Values for PRCP



Comparison of Mean Daily Values for TMAX



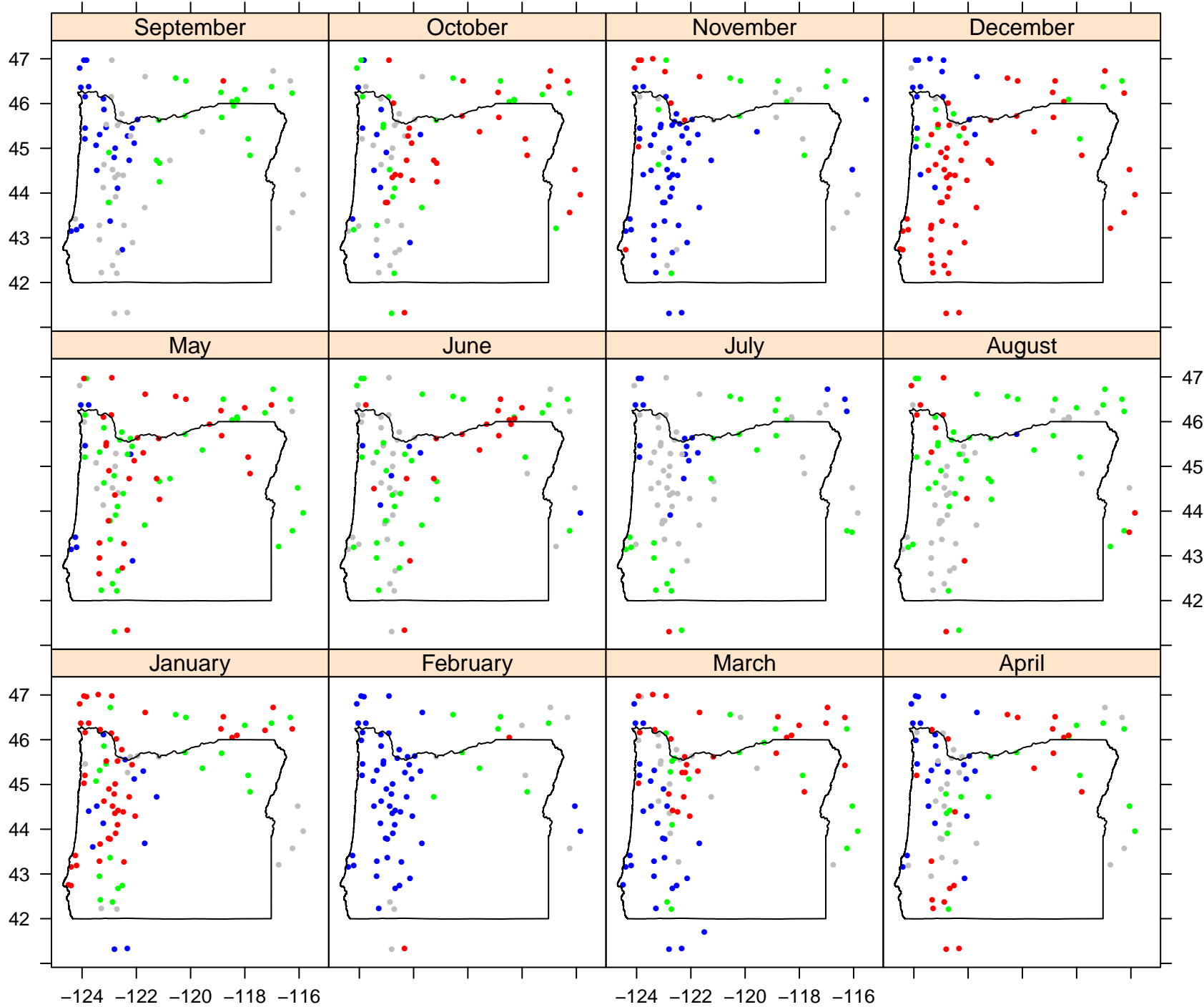
Comparison of Mean Daily Values for TMIN



Current–Past anomalies for PRCP (2000–2010 Daily Means Minus 1970–2000 Daily Means)

-124 -122 -120 -118 -116

-124 -122 -120 -118 -116



Positive values indicate stations that were warmer/wetter in 2000–2010 than 1970–2000

Current–Past anomalies for TMAX (2000–2010 Daily Means Minus 1970–2000 Daily Means)

-124 -122 -120 -118 -116

-124 -122 -120 -118 -116

September

October

November

December

47

46

45

44

43

42

41

May

June

July

August

47

46

45

44

43

42

41

(-3.88,-0.254] ●
(-0.254,0.225] ●
(0.225,0.764] ●
(0.764,5.03] ●

January

February

March

April

47

46

45

44

43

42

41

-124 -122 -120 -118 -116

-124 -122 -120 -118 -116

longitude

Positive values indicate stations that were warmer/wetter in 2000–2010 than 1970–2000

latitude

